



Installation & Maintenance Guide

PLEASE READ COMPLETELY BEFORE INSTALLATION

WARRANTY INFORMATION:

Refer to InStride Surfaces *Stride4Life* Warranty Guidelines.



General Information

Thoroughly examine the flooring prior to installation for grade, color, finish and quality. Ensure adequate lighting for proper inspection. If flooring is not acceptable, do not install the floor. Please contact your Authorized InStride Surfaces Flooring Dealer Partner immediately and arrange for replacement.

Please note our products contain a higher standard of color and pattern variation and installers should be working from multiple open boxes (3–4) to ensure boards are blended throughout the installation area. In the event of visible defects, immediately stop installation and contact your Authorized InStride Surfaces Flooring Dealer Partner. Installation of this product warrants the acceptance by the installer or owner for the quality of the material, as well as job site conditions in which the material is being installed.

Prior to installation of any flooring, it is the responsibility of the installer to ensure that the job site and subfloor

meet the standards of these installation instructions. All necessary accessories, including trim, must be present at the job site prior to beginning installation.

The manufacturer is not responsible for flooring failure resulting from unsatisfactory job site and/or subfloor conditions.

When purchasing flooring, we recommend adding 10%–15% to actual square footage needed for cutting waste allowance.

It shall be the responsibility of the Installer to document installation date, product SKU and Lot information, subfloor moisture content, site relative humidity and site temperature. This information must be documented by the installer and a copy provided to the property owner to ensure product warranty coverage.

Failure to follow all of InStride Surfaces recommended installation guidelines will void warranty coverage.

QUICK REFERENCE (RESIDENTIAL USE)

Concrete Moisture Requirement	Install a 6 mil, PE sheet vapor barrier (not included)
Moisture and PH Testing	Not required
Flatness Tolerance	≤ 1/8-inch over 6-foot and 3/16-inch over 10-foot in all directions
Acclimation Temperature	24 hours between 65° F to 85° F
Installation Temperature	Between 65° F to 85° F
Optimal Service Temperature	Between 50° F to 100° F
Acoustic Underlayment	Use QuietStride™ (already attached)
Doorway Transition Requirements	Not required (except radiant heated areas)
Expansion Gap	Yes, 5/16-inch (8 mm) minimum
Expansion Joints (Large Areas)	Not required
3-Season Rooms	Recommended up to 500-foot ²
Pet Stain Warranty	Yes, but clean when discovered

Revised: 4.24.2026

Job Site & Pre-Installation Guidelines

Please inspect product for color, finish, quality and style BEFORE installing any material. The Stride4Life warranty DOES NOT cover materials with visible defects after they have been installed. Any defects should be reported to the flooring dealer immediately for inspection and replacement if a defect is found.

ALL PLANKS ONCE INSTALLED ARE DEEMED INSPECTED AND ACCEPTED BY THE INSTALLER AND HOMEOWNER.

InStride Surfaces Laminate Flooring should be one of the last items installed for any new construction or remodel project. All InStride Surfaces products must be installed per the manufacturer's guidelines. For any questions or specifications not specifically outlined herein, please contact technical@instridesurfaces.com.

- InStride Surfaces NexGen flooring is intended for indoor use only and is suitable for applications above, on, and below grade.
 - This product should not be installed in seasonal porches, garages, and rooms or homes that are not temperature controlled. NexGen is a floating floor and should be allowed to expand and contract freely. It must not be glued, nailed, or fastened to the subfloor in any way. Permanent cabinets, vanities, islands, and similar items should be installed first.
 - Install NexGen flooring around them, leaving the proper expansion gap of 3/8". Laminate can be installed under toilets. Leave proper expansion space around the flange and use a premium waterproof 100% silicone caulk. **DO NOT** anchor toilet through the material.
 - Subfloor moisture issues should be addressed and corrected prior to installation.
 - Long-term exposure to direct sunlight can potentially damage laminate flooring, causing it to discolor, fade, or buckle. Protect laminate from exposure to direct sunlight via the use of window treatments or UV-tinting on windows. If the flooring is to be installed by an installation contractor, it is suggested that the homeowner and flooring contractor should discuss installation and layout to maximize satisfaction.
- Before beginning a NexGen flooring installation project, it is critical that you
 1. Fully acquaint yourself with the detailed installation instructions for your flooring and subfloor type.
 2. Conduct a complete job site evaluation. Make sure that job site conditions are maintained between 65–85° F for 48 hours prior to, during and after installation. We recommend a moisture barrier if there are concerns of moisture at the jobsite testing higher than 75%.
 - » **DO NOT** glue, nail, screw or fasten to substrate.
 - Install cabinetry, island and peninsula counters, vanities, tubs, and showers first. Then install NexGen around them with proper expansion space. Determine the quantity of NexGen flooring, flooring transitions and wall trim needed for your installation. It is recommended that you add an additional 10% to your square footage for standard installations to account for cuts. For diagonal installations, add 15%.

ALWAYS CHECK MOISTURE LEVELS BEFORE INSTALLATION.

GENERAL INSTALLATION TOOLS

- Tape Measure
- Utility Knife
- Eye Protection
- Tapping Block
- Soft Faced Hammer
- Pull Bar
- Spacers Level ($\frac{3}{8}$ ")
- Reciprocating Saw
- Pencil
- Chalk Line
- Miter or Circular Saw
- Carpenter's Square

Laminate Installation Instructions

1 Preparations

Prior to installation make sure job site conditions (including subfloor, ambient temperature, and relative humidity) will not negatively affect the floor. The manufacturer is not responsible for damages associated with improper installation or poor site conditions.

The surface of the subfloor must have no variation greater than $\frac{3}{16}$ " in a 10' radius. Surface flatness must not vary more than $\frac{1}{8}$ " when measured with a 3' straight edge. Additionally, the subfloor must not slope more than 1" in 12'. All high areas must be sanded or ground down and low areas must be filled with a Portland cement floor patch.

Floating laminate flooring must not be installed on ramps. Subfloors must be structurally sound without deflection.

2 Crawl Spaces

The ground in the crawl spaces should be completely covered using 6 mil polyethylene. Crawl space clearance between the earth and underside of joists should be no less than 18". Perimeter vent area should be equal to 1.5% of the total square footage of the crawl space or as mandated by code.

- Carefully remove any existing quarter round or base board molding.
- Always remove carpet, carpet pad and tack strips.
- Remove any existing floating or un-adhered flooring.
- Be sure the surface of the subfloor is flat, clean, dry, and sound before starting.
- Inspect every plank for any shipping damage when removing from the carton.
- Kitchen cabinets must be installed before the floor is installed.
- » **DO NOT** install cabinets on top of floating laminate flooring.

Laminate Installation Instructions (cont'd.)

3

Other Subfloor Prep

Adhered and sound vinyl sheet goods, vinyl tiles, linoleum and resilient (VCT) tiles usually do not need to be removed if they are fully bonded and free of any notable damage. Some older vinyl sheet goods and tile contain asbestos. Should existing flooring contain asbestos, special precautions must be taken for your safety. Contact a professional immediately for inspection and removal.

Ceramic tiles and terrazzo usually do not need to be removed. Laminate flooring may be installed directly over ceramic tiles that are flat (not pillow edge) and terrazzo, provided they are fully adhered, smooth, sound, and dry. These flooring materials must be smooth and flat to within 3/16" in a 10' radius and must not vary more than 1/8" when measured with a 6' straight edge.

- Aftermarket radiant heated floors must be approved by the manufacturer for use with resilient flooring applications
- The heated floor system must never exceed 85° F (29° C).

Subfloors

Concrete Subfloor Prep

Perform moisture tests as directed by ASTM F1869 and ASTM F2170.

High spots can be removed by grinding. Depressions can be filled with patching compound formulated for use in floor installation. Newly laid concrete slabs must cure for at least 90 days prior to installation. Concrete can be either sealed or unsealed.

Moisture levels of concrete slabs before, during and after installation must be 5 lbs or less using calcium chloride test according to ASTM F1869, and pH must be between 5.0 and 9.0; or, if using ASTM F2170 in-situ probes, relative humidity should be less than 75%. Always measure, record, and retain your testing results.

It is required to use a moisture barrier when installing over a on grade and below grade concrete slab. A 6 mil polyethylene must be used under entire flooring install area. Overlap polyethylene seams 6" and use waterproof tape on seams. Remember to roll the 6 mil polyethylene out perpendicular to the direction you are installing your floor.

Wood Subfloors and Underlayment

(Plywood, OSB, Particleboard, Chipboard, Solid Hardwood, Luan)

Perform moisture tests using a reliable moisture meter in multiple locations. Moisture readings should never exceed 14% for wood subfloors.

Laminate Installation Instructions (cont'd.)

Other Subfloor Prep (cont'd)

Adhered and sound vinyl sheet goods, vinyl tiles, linoleum and resilient (VCT) tiles usually do not need to be removed if they are fully bonded and free of any notable damage. Some older vinyl sheet goods and tile contain asbestos. Should existing flooring contain asbestos, special precautions like a chemical abatement must be performed.

Contact a professional immediately for inspection and removal.

Ceramic tiles and terrazzo usually do not need to be removed. Laminate flooring may be installed directly over ceramic tiles that are flat (not pillow edge) and terrazzo, provided they are fully adhered, smooth, sound, and dry. These flooring materials must be smooth and flat to within 3/16" in a 10' radius and must not vary more than 1/8" when measured with a 6' straight edge. We recommend skim coating all grout joints.

Radiant Flooring Heating Prep

After market radiant heated floors must be approved by the manufacturer for use with resilient flooring applications. The subfloor temperature should not exceed 85° F (29° C).

4

Temperature and Expansion Requirements

Temperatures within the room must be maintained between 65° and 85° Fahrenheit 48 hours before, during and after installation. A 3/8" expansion space must be maintained around the perimeter of the room and all fixed objects such as pipes.

Casing and Doorjamb Preparation

Doorjamb and casings must be undercut so that the plank can slide underneath. A 3/8" expansion space must also be included around the undercut jamb and casings. A reciprocating saw is recommended to create the necessary undercut. Never undercut metal door casings.

Cutting Tip: To undercut the casing lay a scrap piece of flooring next to the casing and lay the saw flat on top of the flooring so that the saw easily cuts to the height of the plank.

NEXGEN FLOORING IS INTENDED FOR INDOOR USE ONLY.

Laminate Installation Instructions (cont'd.)

4

Pre-Installation Quality Inspection

Inspect all laminate planks to ensure it is not damaged prior to installation. Check the tongue and groove to ensure both are free of debris or damage. NexGen has more unique planks than the industry standard. It is recommended to open 4 boxes install NexGen from multiple cartons during installation.

Proper Storage and Acclimation

Cartons should be evenly stacked prior to installation, no more than five cartons high on a flat surface and away from any heating or cooling ducts or direct sunlight. Excess flooring should be stored in a protected and climate-controlled environment for possible future repairs.

The HVAC system should be on and functional before, during and after installation.

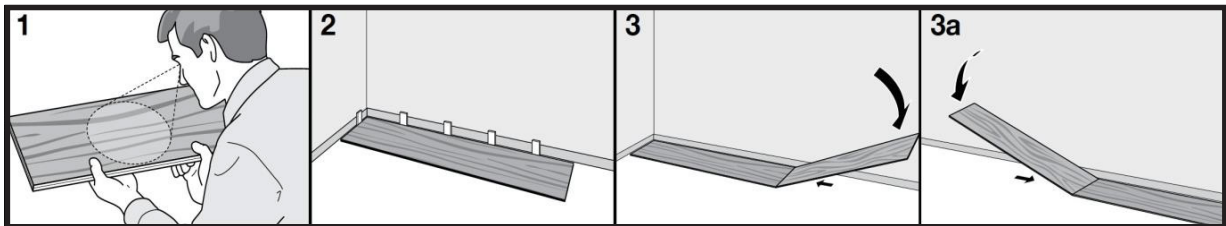


FIGURE 1 – 3a

Initial Layout and Row Assembly (Figure 1–3a)

- 1. Plank Selection and Blending** - Inspect each plank. NexGen has more unique planks than the industry standard. While installing blend planks from four cartons at the same time to ensure good color and shade mixture.
- 2. Starting the First Row** - It is recommended that installation begin in a corner of the room. Between the first row of flooring and the wall, insert spacers so that a 3/8" gap is maintained.
- 3. Connection Technique** - When installing the first row, insert the short edge of one plank into the short edge of another plank at slight angle and rotate downward. Continue to complete the starter row, maintaining a straight edge for the following row. Use a tapping block and soft faced hammer to close any gaps between the planks.
 - a.) Final Cut** - Once you reach the end of the first row, measure and cut the final plank so that it completes the row while also leaving the necessary 3/8" expansion gap. Last planks of rows must be at least 6" long.

Laminate Installation Instructions (cont'd.)

5

Cutting and Staggering Rows

Start the second row of flooring by using the trimmed planks from the previous row. First pieces must be at least 6" long. End joints should be staggered a minimum of 6" from one row to the next. At a slight angle, insert the long edge tongue of the first plank in row 2 into the long edge groove of the plank in row 1 until the plank edges meet, and then rotate down until the joints lock.

Engaging the Locking Mechanism

When joining the next plank in the second row, join the short side edges first. There will be a gap on the long side joints when the plank is rotated down. Raise the outside long edge of the plank upward approximately 1". Maintain this angle as you push the plank in until the long edge of the plank meets the long edge of the first row. Rotate downward on the plank until the joint locks. After tapping the long side joint closed, close the short edge joints using a tapping block or pull bar. Repeat these steps to complete the installation.

Installing the Final Row

After each row is complete, ensure there will be a 3/8" gap to the wall. For the last row, align the plank to be used on top of the 2nd to last row. Using a full width plank as a spacer, trace the wall contour. Use a full plank as a straight edge to cut the plank. Insert the long edge tongue into the long edge groove and use a pull bar and hammer to close the gap.

Thresholds and Doorway Fitting

After tapping the long side joint closed, close the short edge joints using a tapping block or pull bar. When the new flooring meets a threshold or a doorway, we recommend undercutting the door jamb. To secure the right cut, turn a plank upside down and place it on the floor up to the door frame. Then place a reciprocating saw flat against

the plank and simply cut through the frame. Remove the cut-out piece and vacuum away debris. Slide plank under precut door frame. Door frame should be cut so that a 1/4" gap is located from the edge of the plank under the casing to the wall. Tap the long side joint closed first, then tap the end joint closed.

Working Around Single Pipes

Allow 3/8" expansion space around pipes or other fixed objects. In rows where there is a pipe, make sure the pipe falls exactly in line with the short side of two planks. Select a drill bit with the same diameter as the pipe plus 3/4". Click the planks together on the short side and drill a hole centered on the joint between the two planks. Then install the planks.

Managing Double Pipes

For a double pipe, drill a hole equivalent to the diameter of the pipe plus 3/4" at each of the marked points. If located on the long side of the plank, make a 45° cut from each hole to the edge of the plank. Then, using an appropriate glue along the cut edges of the piece you cut out, glue the piece in place. Be sure no glue comes between the cut-out piece and the subfloor. Remove all spacers

Large Area T-Molding Requirements

When installing NexGen in any room or area larger than 50' in any direction, the use of coordinating T-Molding is required to separate the floor into sections no larger than 50' x 50'

Molding and Trim Installation

Install moldings to cover the expansion gap. When installing moldings, never allow nails or screws to enter the laminate flooring or the expansion zone around the flooring perimeter. All moldings and transition strips need to provide a 3/8" expansion space as well.

Revised: 4.24.2026

SPECIAL INSTRUCTIONS FOR INSTALLATION ON STAIRS

Preparation

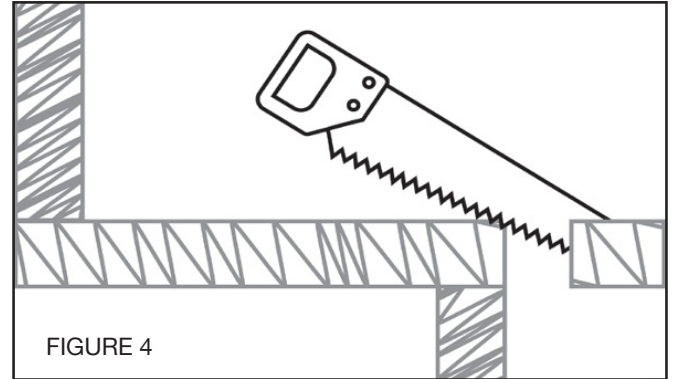
Remove existing floor covering if necessary and thoroughly clean the surface of all treads and risers. Remove all residue of old glue and underlay, sand the surfaces clean and vacuum to remove all dust and debris. Make sure the existing stair treads are free from noise when walked on. Add additional fasteners if necessary. If necessary, cut back the overhang of the existing tread flush to the riser (Figure 4).

Check Run and Rise

Ensure stair treads conform with local building codes in your area for appropriate tread depth and step height. Most building codes require a rise or run difference of no more than 3/8" (10mm) throughout the entire stair system.

Adding An Underlayment (If Required)

If there is more than a 3/8" (10mm) variance on some stairs in the run, it may be worthwhile adding an underlay to some treads to minimize the height difference. To add an underlay, use a plywood type material cut to the size of the tread and affixed with urethane construction adhesive.



INSTALLATION ON STAIRS

When installing on stairs it is recommended all flooring material be cut and dry fit prior to applying adhesive. If flush mount nosing is being used apply adhesive leaving dry spots on each end and one in the center.

Use a hot melt glue on dry spots to help hold nosing from moving until adhesive has cured. Install nosing pressing firmly into the adhesive. Install flooring planks and press firmly into adhesive. Use painters' tape to hold planks and nosing in place for 24 hours until adhesive has set.

» **DO NOT allow traffic on stairs for 24 hours.**

On top step if flooring planks are being installed on landing that is a floating installation you must use an overlap nosing that will allow expansion space between nosing and floating planks.

IMPORTANT: REMOVE ATTACHED PAD BEFORE INSTALLING ON STAIRS. SCRAPE OFF PAD AND CLEAN THE SURFACE TO REMOVE ALL UNDERLAY RESIDUE FROM THE BACK OF THE BOARD.

Protect Your Floor

- Protect your floor with floor protectors that are made of non-staining felt under the legs of furniture to help prevent scuffing and scratching; Larger pads may be required on bigger objects. Scratching due to insufficient protection are not covered under by the warranty.
- Avoid walking on your laminate floors with metal cleats. An exposed heel nail in a high heel can exert up to 8,000 pounds per square inch. This kind of impact can dent any floor surface.
- When moving heavy furniture, **DO NOT** slide it on the flooring. It is best to pick up the furniture completely to protect the floor from damage.

Floor Repairs

- Very light and small surface scratches can be repaired with a staining “touch up” pen of the appropriate color or by using an almond stick. Please refer to manufacturer’s recommendations on proper application.
- Slightly deeper scratches can be repaired by means of colored putty, acrylic and/or stains. Fill the scratches with the putty, level with putty knife and use terry cloth towel to wipe off excess.
- Very deep scratches or gouges may require the replacement of planks.

Plank Replacement

1. When replacing a plank make sure the plank that will be used for the replacement is in the room to acclimate for 48 hours to room temperature before the plank replacement.
2. When choosing a replacement plank use a plank that is not an identical plank to any of the planks that it will be touching. Choosing a plank that has different characteristics than the ones surrounding it will give the best results.
3. Locate the damaged plank to be replaced. Using a straight edge mark a line down the center of the plank. Next draw a 45° angle from the corners to the center line to form a triangle at each end.
4. Use an extra plank to set your saw depth to avoid cutting the subfloor. Cut along the center line of the plank, sweep or vacuum any debris. Next, carefully cut the diagonals, taking care not to damage adjoining planks, clean up any remaining debris.
5. Remove the two center sections and carefully remove the triangles from each end.
6. Prepare the new plank by cutting off the top tongue and slightly undercutting with a utility knife.
7. Remove the small locking nub from the top of the end and side groove of the plank.
8. Cut off the bottom right grooves at a 45° angle.
9. Apply adhesive to the installed planks on the exposed locking grooves.
10. Apply adhesive to the groove sides of the new plank.
11. Slide the right side at an angle under the adjacent plank while sliding the bottom at the same time.
12. Once the right side is in rotate the plank in place and firmly seat the bottom of the plank.
13. Tap the left side gently with a mallet and clean up any adhesive residue.

Revised: 4.24.2026

Cleaning & Maintenance

Preventative Maintenance

- Prevent indentations and scratches by using non-staining floor protectors on the legs of chairs, appliances, and all heavy furniture. Floor protectors should be at least 1" in diameter. Periodically clean protectors to remove grit that may become embedded and cause scratching.
- Place mats at entrances. Mats should have a non-rubberized backing and be labeled as non-staining.
- We recommend the use of a hard surface (non-studded), non-rubber chair mat to protect your floor from office chairs with casters. Rolling chair manufacturers and industry experts recommend replacing chair wheels when they show signs of wear and tear, generally every 2–3 years depending on usage.
- Remove shoes with metal spikes, or pointed high heels before walking on the floor.

Cleaning

- Sweep the floor regularly with a soft bristle broom.
- Clean your floors with a professional laminate floor cleanser. InStride Surfaces recommends a P/H Neutral resilient floor cleaner.
- For everyday cleaning, a damp mop moistened with warm water will suffice.
- DO NOT USE A STEAM MOP or an Industrial Rotary cleaner.

NOTE: Always read the cautionary information on all cleaners prior to use.

Instride

SURFACES

For help with installation and maintenance,
contact our technical department at:
technical@instridesurface.com

Explore more at:
instridesurfaces.com



built for pets ✓



waterproof ✓



easy-to-clean ✓



eco-friendly ✓



phthalate-free ✓



CERTIFIED BY
SCS Global Services